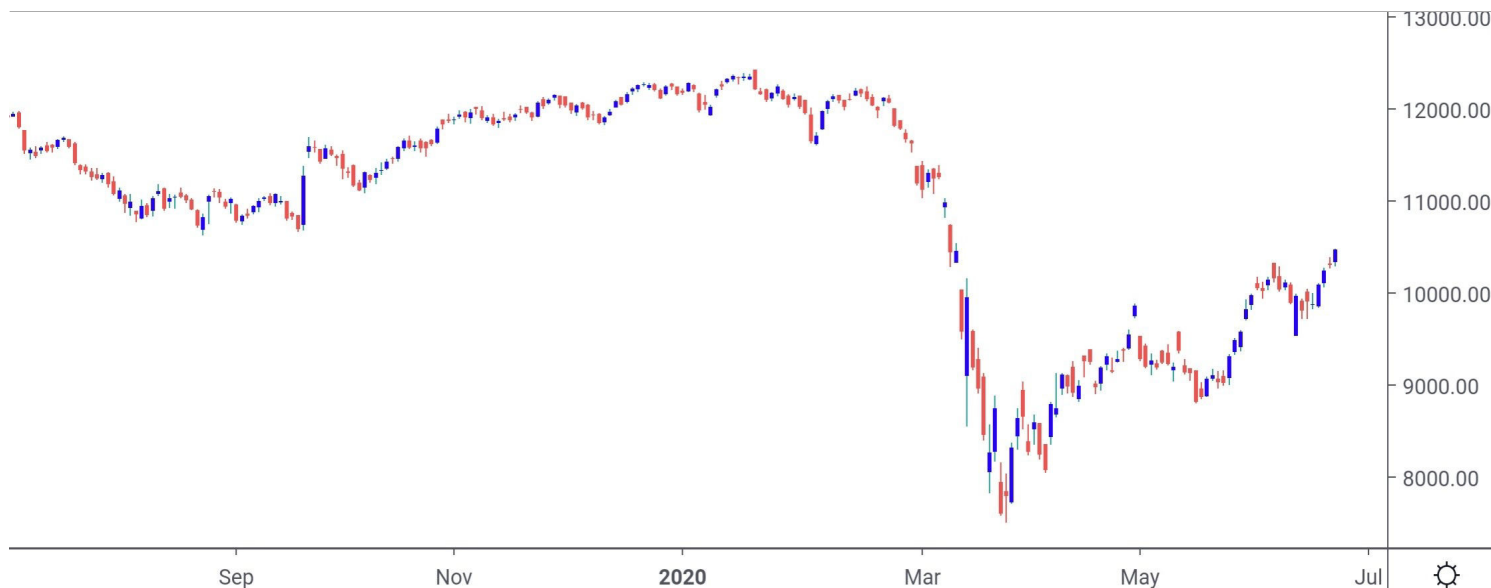


NIFTY SPOT : IMMEDIATE SUPPORT AT 10400-10330



Nifty spot closed 1.55% higher at 10471. Index opened with mild gap up and remained strong throughout the day closing session near days high. Index forms consecutive fourth higher high Lower low formation. Going ahead resistance is placed at 10520-10570-10650 while support comes at 10400-10330-10280.

Intraday Nifty

Resistance - 10520-10570-10650

Support - 10400-10330-10280

BANK NIFTY SPOT : IMMEDIATE SUPPORT AT 22000-21800



Bank Nifty spot closed 2.56% higher at 22264. Banknifty opened flat but continue its upward move and closed the session near days high. Banknifty continue to form fourth consecutive higher high and lower high formation. Going forward index has support around 22000-21800-21650 while resistance comes at 22500-22650-22800.

Intraday Bank Nifty

Resistance - 22500-22650-22800

Support - 22000-21800-21650

Technical Trend

INTRADAY TRADER'S PICKS

Sr.No.	STOCK	CLOSE	Target 1	Target 2	Stop Loss	RECOMMENDATION
1	KOTAKBANK	1390	1415	1430	1385	BUY ABOVE 1400
2	INFY	720	733	740	717	BUY ABOVE 725
3	MINDTREE	928	945	955	925	BUY ABOVE 935
4	ESCORTS	970	955	945	975	SELL BELOW 965
5	VOLTAS	547	538	533	548	SELL BELOW 543

Technical Trend

DERIVATIVES

INDICES SNAPSHOT

SCRIPS	CP AS ON 22/6/2020	CP AS ON 23/6/2020	Change (%)	OI AS ON 22/6/2020	OI AS ON 23/6/2020	Change (%)
BANKNIFTY	21697	22291.75	2.74	1907645	1847845	-3.13
NIFTY	10288.2	10467.7	1.74	11829675	12773700	7.98
NIFTYIT	14370	14640	1.88	750	950	26.67

Derivative Highlights

- ⇒ Nifty Future closed with a Premium of 9 points v/s a Discount of 6 points in the previous session.
- ⇒ Nifty Future Open Interest Increased by 7.98%. Bank Nifty Future Open Interest Decreased by 3.13%.
- ⇒ Nifty PCR - OI Increased from 1.37 to 1.52, Nifty Bank PCR - OI Increased from 1.21 to 1.37.
- ⇒ FII Bought Rs 168.96 crore while DII Bought Rs 454.48 crore in the Cash Segment. FII Sold Rs 114.7 crore in Index Futures Sold Rs 319.72 crore in index options, while in Future they Bought Rs 116.47 crore and Bought Rs 201.28 in stock options.
- ⇒ Among Index Option space, Highest Open Interest concentration was seen in 10000 & 9500 Strike price among the PE options. Where as among CE Options Highest Open Interest Concentration was seen in 10500 & 11000 Strike price.
- ⇒ Highest Open Interest Build Up among the PE options was seen in 10400 & 10300 Strike price. Among CE options highest build up was seen in 10550 & 10650 Strike price.

OI Concentration

PUT OPTION		CALL OPTION	
Strike Price	Open Interest	Strike Price	Open Interest
10000	4641150	10500	3616275
9500	3503175	11000	3096150
9900	3482025	10600	2584800
9600	3348375	10700	2270025
9800	3268575	10800	1960425

Highest Change in OI

PUT OPTION		CALL OPTION	
Strike Price	Change in OI	Strike Price	Change in OI
10400	1743975	10550	341850
10300	1090725	10650	237525
10250	604050	10700	217050
10200	570750	10800	205500
10500	555750	10750	72450

MWPL

SCRIPS	OI %	BAN
JUSTDIAL	101%	YES
IDEA	95%	YES
IBULHSGFIN	88%	NO
TATAMOTORS	87%	NO
CENTURYTEX	87%	YES
BANKBARODA	86%	NO
INDUSINDBK	86%	NO
VEDL	84%	NO
MUTHOOTFIN	83%	NO
EQUITAS	83%	NO

Technical Trend

Stock Analysis

Long Build-up	Long Unwinding	Short Build-up	Short Covering
ADANIENT	AMARAJABAT	PAGEIND	ACC
ASHOKLEY	ESCORTS	PETRONET	ADANIPORTS
BAJFINANCE	MRF	VOLTAS	BIOCON
BRITANNIA	TORNTPHARM		GAIL
COLPAL			HDFCBANK
HDFCLIFE			LT

STATISTICS

Highest Premium

SCRIPS	Premium %	Price change %
IDEA	0.98	1.49
JINDALSTEL	0.72	1.28
GMRINFRA	0.46	2.61
SAIL	0.46	4.17
BANDHANBNK	0.46	12.72

Highest Discount

SCRIPS	Premium %	Price change %
CHOLAFIN	-0.51	-0.27
ONGC	-0.47	0.94
BAJFINANCE	-0.44	6.52
MFSL	-0.38	0.13
HAVELLS	-0.34	0.07

TOP 5 VOLUME GAINER FOR THE SESSION

SCRIPS	CP AS ON 22/6/2020	CP AS ON 23/6/2020	Change (%)	VOL AS ON 22/6/2020	VOL AS ON 23/6/2020	Change (%)
JUSTDIAL	360.4	390.25	8.28	133	4881	3569.92
ADANIENT	154.3	157.7	2.20	509	4760	835.17
SAIL	31.45	32.65	3.82	431	3787	778.65
BHEL	33.7	34.85	3.41	797	5655	609.54
JINDALSTEL	144.5	147.3	1.94	74	267	260.81

TOP 5 VOLUME LOSER FOR THE SESSION

SCRIPS	CP AS ON 22/6/2020	CP AS ON 23/6/2020	Change (%)	VOL AS ON 22/6/2020	VOL AS ON 23/6/2020	Change (%)
IDEA	10.15	10.35	1.97	6717	366	-94.55
CENTURYTEX	324.95	316.8	-2.51	7181	998	-86.10
RBLBANK	182.55	187.55	2.74	30493	13204	-56.70
CIPLA	657.45	660.65	0.49	21040	9609	-54.33
EQUITAS	55.15	54.6	-1.00	5202	2612	-49.79

Technical Trend

TOP 10 OPEN INTEREST GAINER FOR THE SESSION

SCRIPS	CP AS ON 22/6/2020	CP AS ON 23/6/2020	Change (%)	OI AS ON 22/6/2020	OI AS ON 23/6/2020	Change (%)
JUSTDIAL	360.4	390.25	8.28	1909600	2825200	47.95
NIFTYIT	14370	14640	1.88	750	950	26.67
RAMCOCEM	632	646.3	2.26	1104000	1374950	24.54
VOLTAS	552.2	549.05	-0.57	4020000	4770000	18.66
BAJFINANCE	2831.9	3012.4	6.37	7298750	8259250	13.16
PETRONET	263.25	259.95	-1.25	11763000	13116000	11.50
ONGC	84.2	85.25	1.25	62493900	69467000	11.16
SAIL	31.45	32.65	3.82	42228800	46786800	10.79
COLPAL	1380.95	1410.8	2.16	1973300	2168600	9.90
SRF	3618.6	3729.45	3.06	608250	665250	9.37

TOP 10 OPEN INTEREST LOSER FOR THE SESSION

SCRIPS	CP AS ON 22/6/2020	CP AS ON 23/6/2020	Change (%)	OI AS ON 22/6/2020	OI AS ON 23/6/2020	Change (%)
ESCORTS	979.5	968.75	-1.10	2711500	2043800	-24.62
CENTURYTEX	324.95	316.8	-2.51	4471600	3711600	-17.00
CANBK	111.85	113.95	1.88	14050000	12011400	-14.51
NCC	31	31.95	3.06	25983000	22464000	-13.54
IDEA	10.15	10.35	1.97	354732000	308042000	-13.16
INFRATEL	223	231.85	3.97	13158800	11535200	-12.34
BALKRISIND	1246.3	1242.55	-0.30	1600000	1424000	-11.00
IDFCFIRSTB	28.35	28.45	0.35	130264000	116550000	-10.53
ADANIPOWER	38.3	38	-0.78	29400000	26660000	-9.32
GLENMARK	519.55	483.75	-6.89	6188200	5627200	-9.07

Technical Trend

Pivot Report– Nifty 50

Symbol	PClose	Support3	Support2	Support1	Pivot	Resist1	Resist2	Resist3
Adani Ports & Special Economic Zone Ltd.	355.7	338.8	342.8	349.2	353.2	359.7	363.7	370.1
Asian Paints Ltd.	1683.9	1605.6	1623.3	1653.6	1671.3	1701.6	1719.3	1749.6
Axis Bank Ltd.	443.7	419.8	425.1	434.4	439.7	449.0	454.3	463.6
Bajaj Auto Ltd.	2862.2	2769.6	2807.3	2834.7	2872.4	2899.9	2937.6	2965.0
Bajaj Finance	3025.5	2593.0	2713.0	2869.3	2989.3	3145.5	3265.5	3421.8
Bajaj Finserv Ltd.	6319.7	5855.1	5973.0	6146.3	6264.2	6437.5	6555.4	6728.7
Bharat Petroleum Corporation Ltd.	392.0	374.6	378.4	385.2	389.1	395.9	399.7	406.5
Bharti Airtel Ltd.	578.8	563.7	569.0	573.9	579.3	584.2	589.5	594.4
Bharti Infratel	232.4	217.4	220.8	226.6	230.0	235.8	239.2	245.0
Britannia Industries Ltd.	3467.1	3348.7	3387.5	3427.3	3466.1	3505.9	3544.7	3584.5
Cipla Ltd.	659.8	633.5	644.5	652.1	663.1	670.7	681.7	689.3
Coal India Ltd	143.9	138.9	141.1	142.5	144.6	146.0	148.2	149.6
Dr. Reddy's Laboratories Ltd.	4108.9	3966.1	4003.1	4056.0	4093.0	4145.9	4182.9	4235.8
Eicher Motors Ltd.	17891.2	17277.5	17443.7	17667.5	17833.7	18057.5	18223.7	18447.5
GAIL (India) Ltd.	99.3	95.5	96.7	98.0	99.1	100.4	101.6	102.9
Grasim Industries Ltd.	622.4	590.9	602.0	612.2	623.3	633.5	644.6	654.8
HCL Technologies Ltd.	580.3	548.4	556.1	568.2	575.8	587.9	595.6	607.7
HDFC Bank Ltd.	1042.3	995.8	1006.2	1024.2	1034.6	1052.7	1063.1	1081.1
Hero MotoCorp Ltd.	2418.9	2362.0	2383.8	2401.3	2423.1	2440.7	2462.5	2480.0
Hindalco Industries Ltd.	158.4	143.9	147.3	152.8	156.2	161.7	165.1	170.6
Hindustan Unilever Ltd.	2156.0	2044.0	2072.8	2114.4	2143.2	2184.8	2213.6	2255.2
Housing Development Finance Corporation Ltd.	1838.1	1770.5	1786.8	1812.4	1828.7	1854.4	1870.7	1896.3
I T C Ltd.	185.9	181.8	183.3	184.6	186.0	187.3	188.8	190.1
ICICI Bank Ltd.	376.2	353.4	358.8	367.5	372.9	381.6	387.0	395.7
Indian Oil Corporation Ltd.	89.4	85.8	87.0	88.2	89.3	90.5	91.7	92.9
IndusInd Bank Ltd.	520.4	476.9	487.1	503.7	513.9	530.5	540.7	557.3
Infosys Ltd.	720.7	667.9	680.0	700.3	712.4	732.7	744.8	765.1
JSW Steel Ltd.	201.7	192.7	195.4	198.5	201.2	204.3	207.0	210.1
Kotak Mahindra Bank Ltd.	1389.9	1315.8	1332.9	1361.4	1378.6	1407.1	1424.2	1452.7
Larsen & Toubro Ltd.	967.6	866.7	887.9	927.7	948.9	988.7	1009.9	1049.7
Mahindra & Mahindra Ltd.	516.4	480.4	489.0	502.7	511.3	525.0	533.6	547.3
Maruti Suzuki India Ltd.	5886.5	5685.7	5774.1	5830.3	5918.8	5975.0	6063.4	6119.6
Nestle India Ltd.	16548.4	15755.6	15982.8	16265.6	16492.8	16775.6	17002.8	17285.6
NTPC Ltd.	100.8	90.6	92.8	96.8	99.0	102.9	105.1	109.1
Oil & Natural Gas Corporation Ltd.	85.7	82.4	83.4	84.5	85.5	86.6	87.6	88.7
Power Grid Corporation of India Ltd.	187.5	171.4	175.2	181.3	185.2	191.3	195.1	201.2
Reliance Industries Ltd.	1720.9	1655.8	1685.9	1703.4	1733.6	1751.1	1781.2	1798.7
Shree Cement Ltd.	22756.2	21330.0	21690.0	22223.1	22583.1	23116.2	23476.2	24009.3
State Bank of India	192.5	183.9	185.9	189.2	191.1	194.4	196.4	199.7
Sun Pharmaceutical Industries Ltd.	500.5	478.8	484.2	492.3	497.7	505.8	511.2	519.3
Tata Consultancy Services Ltd.	2035.3	1981.5	1995.8	2015.5	2029.8	2049.5	2063.8	2083.5
Tata Motors Ltd.	104.4	98.1	100.0	102.2	104.1	106.3	108.2	110.4
Tata Steel Ltd.	332.0	320.3	323.2	327.6	330.6	335.0	337.9	342.3
Tech Mahindra Ltd.	558.8	533.3	538.9	548.9	554.5	564.4	570.0	580.0
Titan Company Ltd.	999.3	958.0	969.8	984.5	996.3	1011.0	1022.8	1037.5
UltraTech Cement Ltd.	3942.8	3746.0	3789.8	3866.3	3910.2	3986.7	4030.5	4107.0
UPL Ltd.	463.1	437.9	445.3	454.2	461.7	470.6	478.0	486.9
Vedanta Ltd	110.0	105.9	107.5	108.7	110.3	111.6	113.2	114.4
Wipro Ltd.	220.6	205.7	209.3	215.0	218.6	224.3	227.9	233.6
Zee Entertainment Enterprises Ltd.	182.0	165.5	170.8	176.4	181.6	187.2	192.5	198.1

**BP WEALTH****Technical Research Desk****Tel: +91 22 61596173****Institutional Sales Desk****Tel: +91 22 61596403/04/05****Disclaimer Appendix****Analyst s holding in the Stock : Nil****Analyst s Certification:**

We analysts and the authors of this report, hereby certify that all of the views expressed in this research report accurately reflect our personal views about any and all of the subject issuer s or securities. We also certify that no part of our compensation was, is, or will be directly or indirectly related to the specific recommendation s or view s in this report. Analysts aren't registered as research analysts by FINRA and might not be an associated person of the BP Equities Pvt. Ltd. Institutional Equities.

General Disclaimer

This report has been prepared by the research department of BP EQUITIES Pvt. Ltd, is for information purposes only. This report is not construed as an offer to sell or the solicitation of an offer to buy or sell any security in any jurisdiction where such an offer or solicitation would be illegal.

BP EQUITIES Pvt. Ltd have exercised due diligence in checking the correctness and authenticity of the information contained herein, so far as it relates to current and historical information, but do not guarantee its accuracy or completeness. The opinions expressed are our current opinions as of the date appearing in the material and may be subject to change from time to time. Prospective investors are cautioned that any forward looking statement are not predictions and are subject to change without prior notice.

Recipients of this material should rely on their own investigations and take their own professional advice. BP EQUITIES Pvt. Ltd or any of its affiliates or employees shall not be in any way responsible for any loss or damage that may arise to any person from any inadvertent error in the information contained in this report. BP EQUITIES Pvt. Ltd. or any of its affiliates or employees do not provide, at any time, any express or implied warranty of any kind, regarding any matter pertaining to this report, including without limitation the implied warranties of merchantability, fitness for a particular purpose, and non-infringement. The recipients of this report should rely on their own investigations.

BP EQUITIES Pvt. Ltd and/or its affiliates and/or employees may have interests/ positions, financial or otherwise in the securities mentioned in this report. Opinions expressed are our current opinions as of the date appearing on this material only. While we endeavor to update on a reasonable basis the information discussed in this material, there may be regulatory, compliance, or other reasons that prevent us from doing so.

This report is not directed to or intended for display, downloading, printing, reproducing or for distribution to or use by any person in any locality, state and country or other jurisdiction where such distribution, publication or use would be contrary to the law or regulation or would subject to BP EQUITIES Pvt. Ltd or any of its affiliates to any registration or licensing requirement within such jurisdiction.

Corporate Office:

4th floor,
Rustom Bldg,
29, Veer Nariman Road, Fort,
Mumbai-400001
Phone- +91 22 6159 6464
Fax-+91 22 6159 6160
Website- www.bpwealth.com

Registered Office:

24/26, 1st Floor, Cama Building,
Dalal street, Fort,
Mumbai-400001
BP Equities Pvt. Ltd.
CIN No: U67120MH1997PTC107392